



flowbel[®]

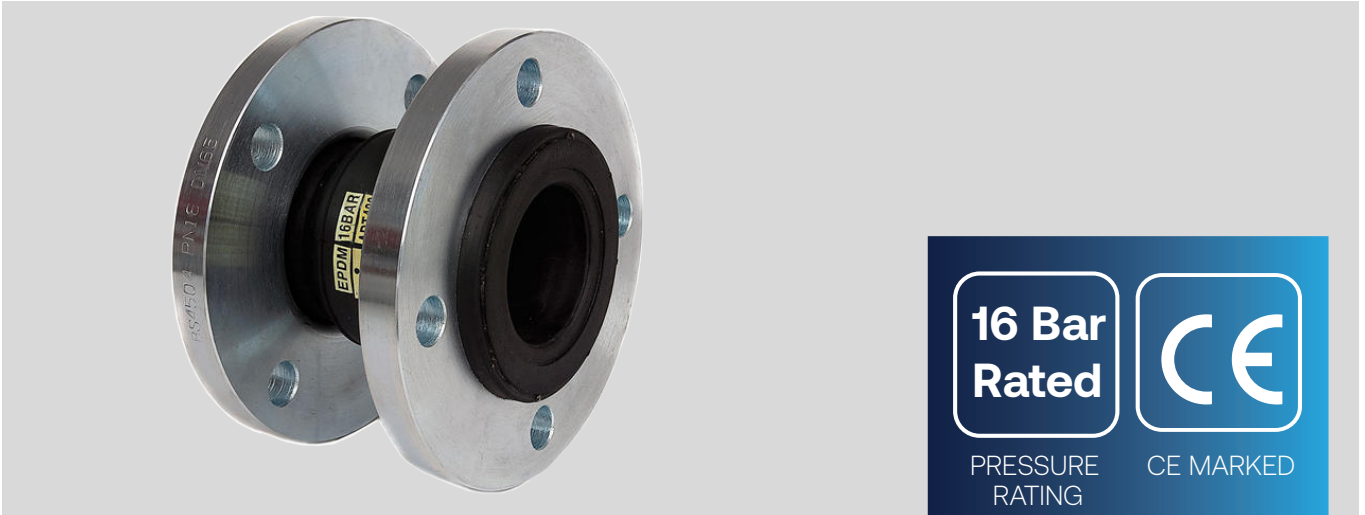
Untied Flanged Flexible Connector

DATA SHEET

First Publication Date: 01/09/2020

Revision: v1

Revision Date:

**16 Bar
Rated**PRESSURE
RATING

CE MARKED

also available are Tied
and Screwed Flexible
Connectors

ex stock

PRODUCT OVERVIEW

Flowbel Untied Range Flanged Flexible Connector

The **flowbel** untied flexible connectors (bellows) are primarily for use in HVAC installations and are the perfect solution to absorb noise and vibration transference through pipework. Helping to prevent damage and undue downtime of equipment.

Untied is supplied unrestrained with loose swivel round flanges (Untied).

Most rubber bellows are used on heating and chilled water systems. We offer an ethylene propylene diene monomer (EPDM) elastomer with a nylon reinforced body. EPDM exhibits excellent compatibility with hot and cold water.

For sizes 25mm to 300mm both Tied and Untied Units are suitable for a maximum operating pressure of 16bar (at ambient temperature). As with any other unrestrained expansion joint, rubber bellows will extend under pressure.

- Flanged PN16 BS4504
- EPDM Body
- Zinc Plated Carbon Steel Oval Flanges
- Nylon Cord Fabric with Steel Reinforcement
- Max Pressure: 16 Bar
- Working Temperature: -20°C to + 100°C

MODELS, DIMENSIONS & ELECTRICAL DATA

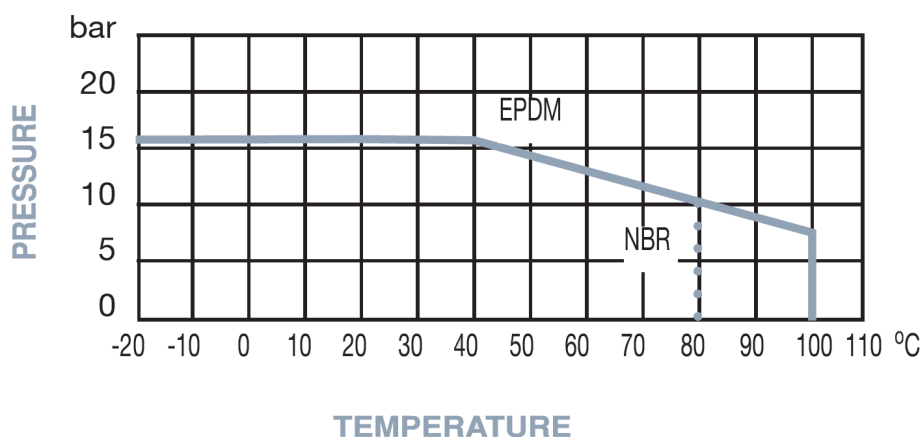
Flowbel Untied Range
Flanged Flexible Connector

MODEL	D	D1	b	L	Ø - n	HD	DA	Ext	Comp	Kgs
flowbel 32mm PN16 Untied Flexibles	140	100	16	130	18 - 4	12	15°	8	15	3.2
flowbel 40mm PN16 Untied Flexibles	150	110	16	130	18 - 4	12	15°	8	15	3.7
flowbel 50mm PN16 Untied Flexibles	165	125	18	130	18 - 4	12	15°	8	15	5
flowbel 65mm PN16 Untied Flexibles	185	145	18	130	18 - 4	12	15°	8	15	6.1
flowbel 80mm PN16 Untied Flexibles	200	160	20	130	18 - 8	12	15°	8	15	7
flowbel 100mm PN16 Untied Flexibles	220	180	20	130	18 - 8	12	15°	8	15	8.5
flowbel 125mm PN16 Untied Flexibles	250	210	22	130	18 - 8	12	15°	8	15	11.5
flowbel 150mm PN16 Untied Flexibles	285	240	22	130	22 - 8	12	15°	8	15	14.4
flowbel 200mm PN16 Untied Flexibles	340	295	24	130	22 - 12	12	15°	8	15	20
flowbel 250mm PN16 Untied Flexibles	405	355	26	130	26 - 12	12	15°	8	15	26
flowbel 300mm PN16 Untied Flexibles	460	410	28	130	26 - 12	12	15°	8	15	32

PERFORMANCE DATA

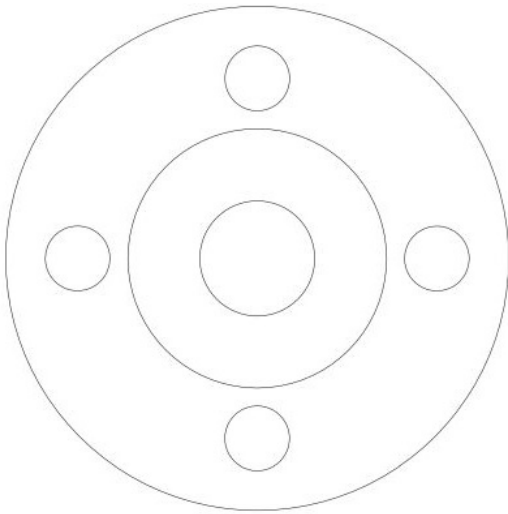
Flowbel Untied Range
Flanged Flexible Connector

Pressure / Temperature

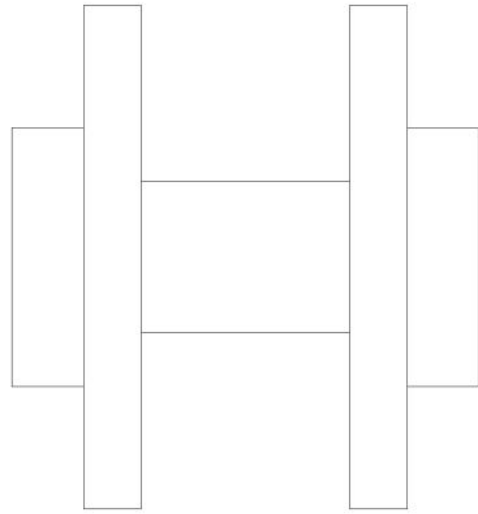


DIMENSIONAL DRAWINGS & **SCHEMATICS**

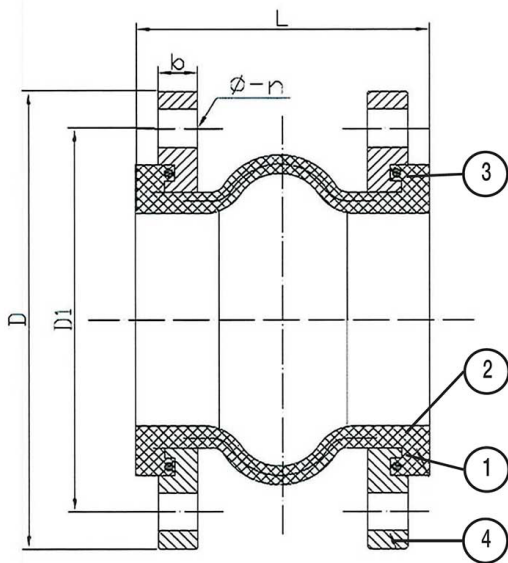
Flowbel Untied Range
Flanged Flexible Connector



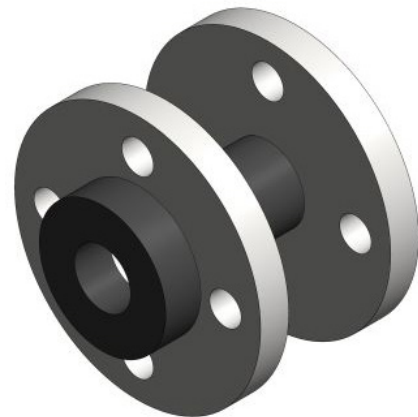
FRONT VIEW



SIDE VIEW

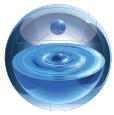


Dimensions



3D Model

Dimensions measured in mm - NOT TO SCALE



flowtech[®]
WATER SOLUTIONS

flowzone[®]

MEMBERS AREA

This section of the **flowtech**[®] website holds information exclusively for members. Members will need to log in to gain access to these pages.

Our member's will be granted exclusive access to our technical resource library. Within this resource is a wide range of product information including data sheets, technical drawings, O&M Manuals and training videos



flowcare[®]

AFTER SALES SERVICE

At **flowtech**[®] we operate a network of Service Engineers located throughout the UK who are supported by our offices located in Greater Manchester. The distribution of engineers means that in the majority of cases we are less than 4 hours away from attending a customer call out.

We place great emphasis on providing technical back up to support our Service Engineers in resolving some difficult operational and technical issues. We pride ourselves on completing a project on time, within budget and never leaving a problem unresolved, or a customer waiting. This quality of service has made us the first choice for our customers.

FOR FURTHER INFORMATION OR ASSISTANCE

contact us

Flowtech Water Solutions are experts in water services and water booster sets. We have continuously supplied a wide range of standard and custom products since being founded in 1996.

MANUFACTURE & SUPPLY

TELEPHONE : 0333 200 1756

EMAIL: info@flowtech.org.uk

SERVICE & MAINTENANCE

TELEPHONE : 0333 200 1813

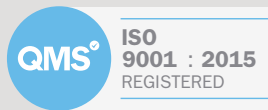
EMAIL: service@flowtech.org.uk

WEBSITE: www.flowtech.org.uk

ADDRESS : Unit 1 Lock Flight Buildings, Wheatlea Industrial Estate,
Wigan, Greater Manchester WN3 6XP United Kingdom



Membership No. 700106



Certificate No. 185352020